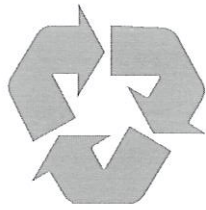


# 2022



## CITY OF ST. MARYS CURBSIDE RECYCLING CALENDAR

**WHO:** Elk Waste Services, Inc. will collect recyclables.  
**WHAT:** Clear, brown & green glass, aluminum, and newspaper.  
**WHEN:** Every other week.  
**WHERE:** Place container at curbside by 7:00 A.M.

FOR ADDITIONAL INFORMATION  
 CALL ELK WASTE SERVICES  
**834-6771 OR 781-1718**  
[www.elkwaste.com](http://www.elkwaste.com)

25 THANKSGIVING DAY 2022 PICK-UP

<b>JANUARY 2022</b> SUN MON TUE WED THU FRI SAT 1 2 3 4 5 6 7 8 9 10 11 12 13 14 15 16 17 18 19 20 21 22 23/30 24/31 25 26 27 28 29	<b>FEBRUARY 2022</b> SUN MON TUE WED THU FRI SAT 1 2 3 4 5 6 7 8 9 10 11 12 13 14 15 16 17 18 19 20 21 22 23 24 25 26 27 28	<b>MARCH 2022</b> SUN MON TUE WED THU FRI SAT 1 2 3 4 5 6 7 8 9 10 11 12 13 14 15 16 17 18 19 20 21 22 23 24 25 26 27 28 29 30 31	<b>APRIL 2022</b> SUN MON TUE WED THU FRI SAT 1 2 3 4 5 6 7 8 9 10 11 12 13 14 15 16 17 18 19 20 21 22 23 24 25 26 27 28 29 30
<b>MAY 2022</b> SUN MON TUE WED THU FRI SAT 1 2 3 4 5 6 7 8 9 10 11 12 13 14 15 16 17 18 19 20 21 22 23 24 25 26 27 28 29 30 31	<b>JUNE 2022</b> SUN MON TUE WED THU FRI SAT 1 2 3 4 5 6 7 8 9 10 11 12 13 14 15 16 17 18 19 20 21 22 23 24 25 26 27 28 29 30	<b>JULY 2022</b> SUN MON TUE WED THU FRI SAT 1 2 3 4 5 6 7 8 9 10 11 12 13 14 15 16 17 18 19 20 21 22 23 24/31 25 26 27 28 29 30	<b>AUGUST 2022</b> SUN MON TUE WED THU FRI SAT 1 2 3 4 5 6 7 8 9 10 11 12 13 14 15 16 17 18 19 20 21 22 23 24 25 26 27 28 29 30 31
<b>SEPTEMBER 2022</b> SUN MON TUE WED THU FRI SAT 1 2 3 4 5 6 7 8 9 10 11 12 13 14 15 16 17 18 19 20 21 22 23 24 25 26 27 28 29 30	<b>OCTOBER 2022</b> SUN MON TUE WED THU FRI SAT 1 2 3 4 5 6 7 8 9 10 11 12 13 14 15 16 17 18 19 20 21 22 23/30 24/31 25 26 27 28 29	<b>NOVEMBER 2022</b> SUN MON TUE WED THU FRI SAT 1 2 3 4 5 6 7 8 9 10 11 12 13 14 15 16 17 18 19 20 21 22 23 24 25 26 27 28 29 30	<b>DECEMBER 2022</b> SUN MON TUE WED THU FRI SAT 1 2 3 4 5 6 7 8 9 10 11 12 13 14 15 16 17 18 19 20 21 22 23 24 25 26 27 28 29 30 31

\* PLACE AT CITY OR STATE MAINTAINED ROAD

<b>RED TUESDAY - Queen of the World Area</b> ANNE ASPEN BAYBERRY BEECH BIRCH CEDAR CLARK COMET DENISE ELM EVERGREEN FALCON FORD GRACE GRANDVIEW LARCH LOCUST MARGARET MARTIN MERCURY PLYMOUTH POPLAR QUEENS RAMBLER SARA S. MICHAEL TO 802 VINE TO 728 WENDEL W. ESCHBACH WILLOW	<b>BLACK TUESDAY - Benzinger Park Area</b> ALPINE AVERYVILLE BEL VISTA CADILLAC CAPRI CATALINA CHERRY HILL * EARL EDGEWOOD FERN FLEMING * FREEDOM HEMLOCK HICKORY JERA LANG LAS. GLORIS LEMANS LIBERTY MALIBU MARIENSTADT * MCKENNDY NOVA PARKVIEW * PEARL ROBIN S. MICHAEL 803 TO 1093 SO. RIDGE SUNRISE TRAILER COURT TEABERRY VILLA VINE RD. 729 TO 947 WEHLER * WES
<b>RED WEDNESDAY</b> AIRPORT ASH BAVARIAN HILL BEZINGER BLAIR BRUSSELLS BUCKTAIL CARBON CRESTVIEW CURRY DARR DEPOT E. ESCHBACH E. KAUL ECKERT FILLMORE FOURTH GRAPHITE GROTZINGER HALL HARRISON HAUBER HIGH JACKSON TO 175 JERSEY JOHN JONES KAUL LECKER LEHNER LINCOLN MERTZ MONROE MULLIGAN NEUBERT PINE PONTZER RETTGER ROSELY TO BLAIR SCHISSLE SIMMON SORG SO. MICHAEL 1094 TO LECKER RD STACKPOLE SWEENEY THERESIA ST. TROUT RUN VALLEY WRIGHT	<b>BLACK WEDNESDAY</b> ANTHONY AUMANDEL BAUMER BERWIND CHAPEL VILLAGE CHESTNUT CROSS DECKERS CHAPEL EARTH RD AREA E. ARCH E. HILL ELEMENTARY GLEN HAZEL MAN CLUB GYPSY HALLER IRON RUN JEEP KALLAS KERNER KEYSTONE LENZE MAPLE MARKET MASON MCGILL MELODY MUIENSTER N. PAUL OAK PARK PATTISON PISTNER RACE RAILROAD RANDOM ROCK ROOSEVELT SERVICE S. LOUIS S. PAUL TO AUGUSTINE S. ST. MARYS SHADY GROVE STECKER TO TIMBERLINE SPRING SPRUCE STATE SUGAR HILL SUMAR TAFT THUNDER TIMBERLINE TOWNVIEW UHL VINE TO 204 WALNUT WILSON WINDFALL 1059 TO END W. ARCH W. CREEK TO 520 W. JOSEPH W. MILL W. RACE W. THERESIA RD.
<b>RED THURSDAY - North Michael / Center Area</b> ABBOTT ARNOLD BENEDICT BENNETT CARDINAL CENTER CHARLES CHURCH EAST JOSEPH ETHELDALE ERICH FOREST GAY GEORGE HILL HAGGERTY HOUSTON JOHNSONBURG LOMBARDO LYNCH MAURUS NICKLAS N. LOUIS N. MICHAEL OILWELL PARADE PARKWAY POPE ROBSON ROSEDALE SCHOOL SHERRY STRAUB SUNSET VERMONT VIRGINIA WALBURGA W. CONDOT WOLFEL	<b>BLACK THURSDAY - North St. Marys / Washington Area</b> ADAM ARMORY ATLANTIC BANK BUNKER HILL CAROLWOOD COLUMBUS DIAMOND DIPPOLD DOVE E. CONDOT EBEN EDWARD ERIE EVERS FOX FOX HOLLOW GEIS AVE. GRANT IDA JEFFERSON LAFAYETTE MADISON MARK N. ST. MARYS LAWRENCE PENN PRINCE ALLEY RESERVE RIGHTMEYER RUSS LANE TERRACE TREMONT WASHINGTON WINDFALL TO 1058 WOODLAND

MATCH YOUR STREET WITH THE COLOR AND DAY. YOUR RECYCLABLES WILL BE PICKED UP ON YOUR COLOR AND DAY.

## **COVID RECYCLING METHOD**

Bottles, jars, & aluminum cans must be liquid free and they must be separated by each item.

Do not place in bags, crush, or break glass.

Place recycling bin where it will be seen easily - use only blue/green recycling bins.

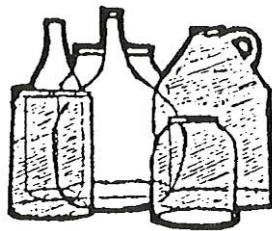
# **Recycling is Easy! Just Follow the Steps!**

## ***ONLY FOOD and BEVERAGE CONTAINERS***

### **HOW TO PREPARE YOUR MATERIALS**

#### **GLASS - CLEAR, BROWN, GREEN**

1. Rinse - labels can stay on
2. Dispose of all lids & caps
3. No window glass, light bulbs, blue glass, pyrex or ceramics
4. No **DRINKING** glasses
5. Place in container  
(Do Not Break)
6. No Plastic Bags
7. All glass must be container glass  
not window glass



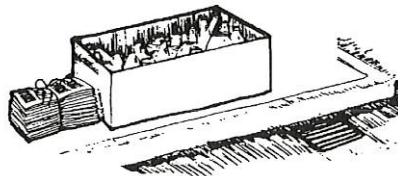
#### **ALUMINUM BEVERAGE CANS**

1. Rinse
2. Flatten, if desired, to save space
3. Place in container
4. No soup or vegetable cans
5. No Plastic Bags
6. Dispose of all lids & caps



#### **NEWSPAPER**

1. In bundles and untied plastic bags
2. **MUST BE DRY** (will be rejected if not)
3. 5 to 10 lb. bundles only



**Note: The special container provided for your recyclables remains the property of the City and must remain at each house or apartment. All houses or residents must call the City or ELK WASTE SERVICES for a container.**

**Do Not Bag Glass and Aluminum.  
No plastic bags please!**

#### **COLLECTION DAY**

Place container at curbside by 7:00 A.M.