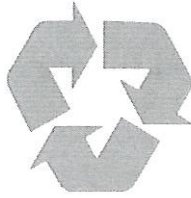


# 2024



## CITY OF ST. MARYS CURBSIDE RECYCLING CALENDAR

**WHO:** Elk Waste Services, Inc. will collect recyclables.  
**WHAT:** Clear, brown & green glass, aluminum, and newspaper.  
**WHEN:** Every other week.  
**WHERE:** Place container at curbside by 7:00 A.M.

• CLOSED: JULY 4, NOVEMBER 28, DECEMBER 25

FOR ADDITIONAL INFORMATION  
 CALL ELK WASTE SERVICES  
**834-6771 OR 781-1718**  
[www.elkwaste.com](http://www.elkwaste.com)

JANUARY 2024							FEBRUARY 2024							MARCH 2024							APRIL 2024						
SUN	MON	TUE	WED	THU	FRI	SAT	SUN	MON	TUE	WED	THU	FRI	SAT	SUN	MON	TUE	WED	THU	FRI	SAT	SUN	MON	TUE	WED	THU	FRI	SAT
	1	2	3	4	5	6					1	2	3						1	2							
7	8	9	10	11	12	13	4	5	6	7	8	9	10	3	4	5	6	7	8	9	7	8	9	10	11	12	13
14	15	16	17	18	19	20	11	12	13	14	15	16	17	10	11	12	13	14	15	16	14	15	16	17	18	19	20
21	22	23	24	25	26	27	18	19	20	21	22	23	24	17	18	19	20	21	22	23	21	22	23	24	25	26	27
28	29	30	31				25	26	27	28	29			24 <sup>31</sup>	25	26	27	28	29	30	28	29	30				

MAY 2024							JUNE 2024							JULY 2024							AUGUST 2024						
SUN	MON	TUE	WED	THU	FRI	SAT	SUN	MON	TUE	WED	THU	FRI	SAT	SUN	MON	TUE	WED	THU	FRI	SAT	SUN	MON	TUE	WED	THU	FRI	SAT
			1	2	3	4						1		1	2	3	CLOSED	5	6						1	2	3
5	6	7	8	9	10	11	2	3	4	5	6	7	8	7	8	9	10	11	12	13	4	5	6	7	8	9	10
12	13	14	15	16	17	18	9	10	11	12	13	14	15	14	15	16	17	18	19	20	11	12	13	14	15	16	17
19	20	21	22	23	24	25	16	17	18	19	20	21	22	21	22	23	24	25	26	27	18	19	20	21	22	23	24
26	27	28	29	30	31		23 <sup>30</sup>	24	25	26	27	28	29	28	29	30	31				25	26	27	28	29	30	31

SEPTEMBER 2024							OCTOBER 2024							NOVEMBER 2024							DECEMBER 2024							
SUN	MON	TUE	WED	THU	FRI	SAT	SUN	MON	TUE	WED	THU	FRI	SAT	SUN	MON	TUE	WED	THU	FRI	SAT	SUN	MON	TUE	WED	THU	FRI	SAT	
1	2	3	4	5	6	7				1	2	3	4	5						1	2	1	2	3	4	5	6	7
8	9	10	11	12	13	14	6	7	8	9	10	11	12	3	4	5	6	7	8	9	8	9	10	11	12	13	14	
15	16	17	18	19	20	21	13	14	15	16	17	18	19	10	11	12	13	14	15	16	15	16	17	18	19	20	21	
22	23	24	25	26	27	28	20	21	22	23	24	25	26	17	18	19	20	21	22	22	22	23	24	CLOSED	26	27	28	
29	30						27	28	29	30	31			24	25	26	27	CLOSED	29	30	29	30	31					

• PLACE AT CITY OR STATE MAINTAINED ROAD

RED TUESDAY - Queen of the World Area					BLACK TUESDAY - Benzinger Park Area					
ANNE	COMET	GRANDVIEW	POPLAR	W. ESCHBACH	ALPINE	* EARL	JERA	* MCKENNDY	SO. RIDGE	WEHLER
ASPEN	DENISE	LARCH	QUEENS	WILLOW	AVERYVILLE	EDGEWOOD	LANG	NOVA	SUNRISE	* WES
BAYBERRY	ELM	LOCUST	RAMBLER		BEL VISTA	FERN	LAS. GLORIS	PARKVIEW	TRAILER COURT	
BEECH	EVERGREEN	MARGARET	SARA		CADILLAC	FLEMING	LEMANS	* PEARL	TEABERRY	
BIRCH	FALCON	MARTIN	S. MICHAEL TO 802		CAPRI	* FREEDOM	LIBERTY	ROBIN	VILLA	
CEDAR	FORD	MERCURY	VINE TO 728		CATALINA	HEMLOCK	MALIBU	S. MICHAEL 803	VINE RD. 729	
CLARK	GRACE	PLYMOUTH	WENDEL		CHERRY HILL	HICKORY	MARIENSTADT	TO 1093	TO 947	

RED WEDNESDAY					BLACK WEDNESDAY								
AIRPORT	CARBON	FILLMORE	JACKSON	LINCOLN	ROSELY	STACKPOLE	ANTHONY	E. ARCH	KALLAS	N. PAUL	SERVICE	STATE	WILSON
ASH	CRESTVIEW	FOURTH	TO 175	MERTZ	TO BLAIR	SWEENEY	AUMANDEL	E. MILL	KERNER	OAK	S. LOUIS	SUGAR HILL	WINDFALL
BAVARIAN	CURRY	GRAPHITE	JERSEY	MONROE	SCHISSE	THERESIA ST.	BAUMER	ELEMENTARY	KEYSTONE	PARK	S. PAUL	SUMAR	1059 TO END
HILL	DARR	GROTZINGER	JOHN	MULLIGAN	SIMMON	TROUT RUN	BERWIND	GLEN HAZEL	LENZE	PATTISON	TO AUGUSTINE	TAFT	W. ARCH
BENZINGER	DEPOT	HALL	JONES	NEUBERT	SORG	VALLEY	CHapel VILLAGE	TO SPORTS-	MAPLE	PISTNER	S. ST. MARYS	THUNDER	W. CREEK TO 520
BLAIR	E. ESCHBACH	HARRISON	KAUL	PINE	SO. MICHAEL	WRIGHT	CHESTNUT	MAN CLUB	MARKET	RACE	SHADY GROVE	TIMBERLINE	W. JOSEPH
BRUSSELLS	E. KAUL	HAUBER	LECKER	PONTZER	1094 TO		CROSS	GYPSEY	MASON	RAILROAD	SIECKER	TOWNVIEW	W. MILL
BUCKTAIL	ECKERT	HIGH	LEHNER	RETTGER	LECKER RD		DECKERS	HALLER	MCGILL	RANDOM	TO TIMBERLINE	UHL	W. RACE
							CHAPEL	IRON RUN	MELODY	ROCK	SPRING	VINE TO 204	W. THERESIA RD.
							EARTH RD AREA	JEEP	MUENSTER	ROOSEVELT	SPRUCE	WALNUT	

RED THURSDAY - North Michael / Center Area					BLACK THURSDAY - North St. Marys / Washington Area						
ABBOTT	CHURCH	HILL	NICKLAS	ROBSON	VIRGINIA	ADAM	DIAMOND	EVERS	LAFAYETTE	RESERVE	WINDFALL
ARNOLD	EAST JOSEPH	HAGGERTY	N. LOUIS	ROSEDALE	WALBURGA	ARMORY	DIPPOLD	FOX	MADISON	RIGHTMEYER	TO 1058
BENEDICT	ETHELDALE	HOUSTON	N. MICHAEL	SCHOOL	W. CONDOT	ATLANTIC	DOVE	FOX HOLLOW	MARK	RUSS LANE	WOODLAND
BENNETT	ERICH	JOHNSONBURG	OILWELL	SHERRY	WOLFEL	BANK	E. CONDOT	GEIS	N. ST. MARYS	TERRACE	
CARDINAL	FOREST	LOMBARDO	PARADE	STRAUB		BUNKER HILL	EBEN	GRANT	LAWRENCE	TREMONT	
CENTER	GAY	LYNCH	PARKWAY	SUNSET		CAROLWOOD	EDWARD	IDA	PENN	WASHINGTON	
CHARLES	GEORGE	MAURUS	POPE	VERMONT		COLUMBUS	ERIE	JEFFERSON	PRINCE ALLEY		

MATCH YOUR STREET WITH THE COLOR AND DAY. YOUR RECYCLABLES WILL BE PICKED UP ON YOUR COLOR AND DAY.

Bottles, jars, & aluminum cans must be liquid free and they must be separated by each item.

Do not place in bags, crush, or break glass.

Place recycling bin where it will be seen easily - use only blue/green recycling bins.

# Recycling is Easy! Just Follow the Steps!

## *ONLY FOOD and BEVERAGE CONTAINERS*

### HOW TO PREPARE YOUR MATERIALS

#### **GLASS - CLEAR, BROWN, GREEN**

1. Rinse - labels can stay on
2. Dispose of all lids & caps
3. No window glass, light bulbs, blue glass, pyrex or ceramics
4. No **DRINKING** glasses
5. Place in container  
(Do Not Break)
6. No Plastic Bags
7. All glass must be container glass  
not window glass



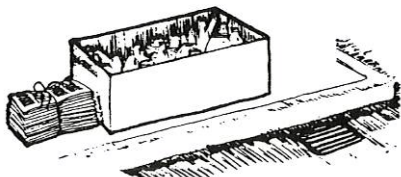
#### **ALUMINUM BEVERAGE CANS**

1. Rinse
2. Flatten, if desired, to save space
3. Place in container
4. No soup or vegetable cans
5. No Plastic Bags
6. Dispose of all lids & caps



#### **NEWSPAPER**

1. In bundles and untied plastic bags
2. **MUST BE DRY** (will be rejected if not)
3. 5 to 10 lb. bundles only



**Note: The special container provided for your recyclables remains the property of the City and must remain at each house or apartment. All houses or residents must call the City or ELK WASTE SERVICES for a container.**

**Do Not Bag Glass and Aluminum.  
No plastic bags please!**

#### **COLLECTION DAY**

Place container at curbside by 7:00 A.M.